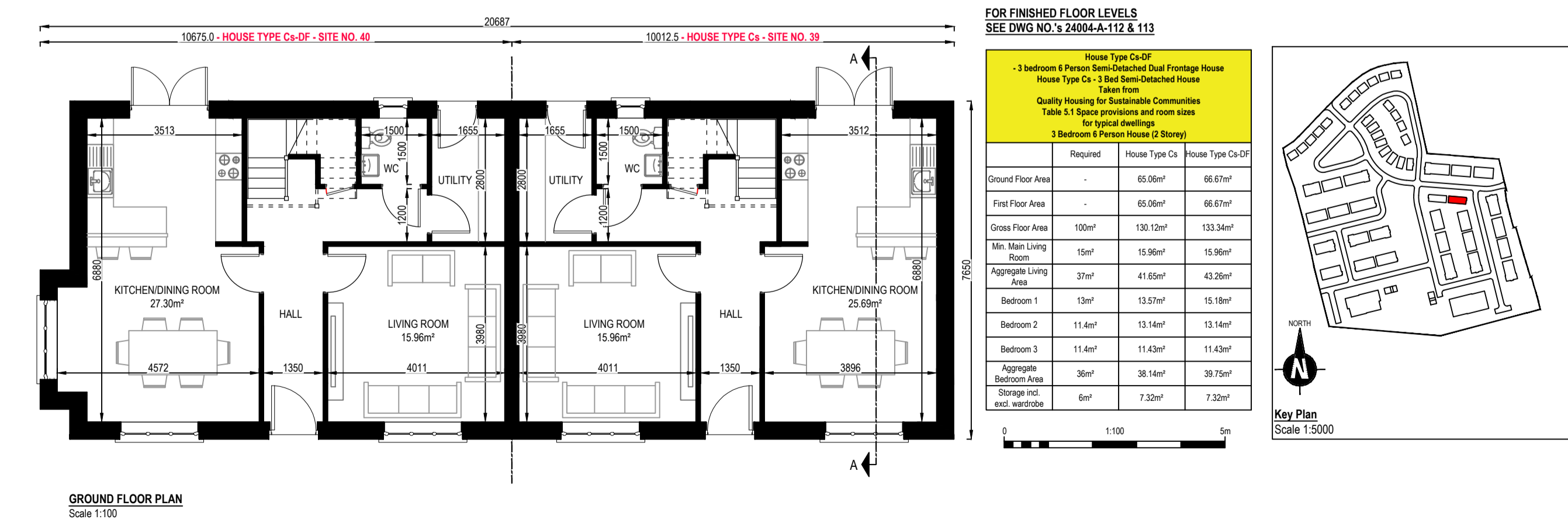
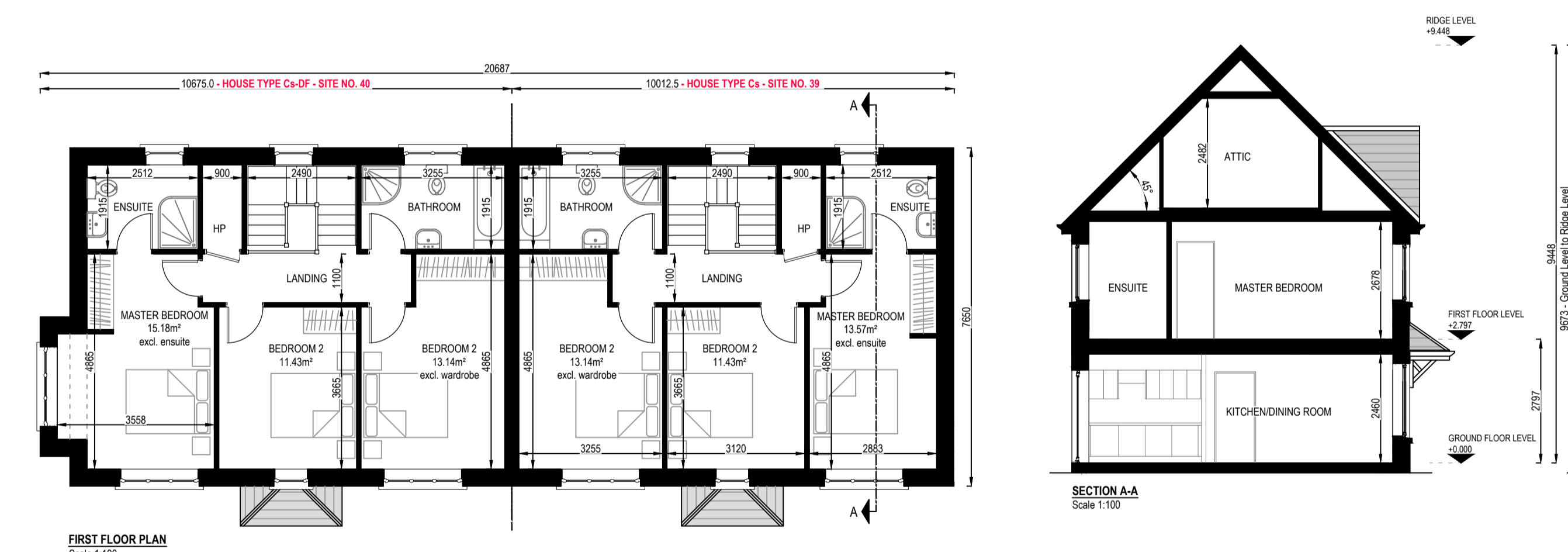
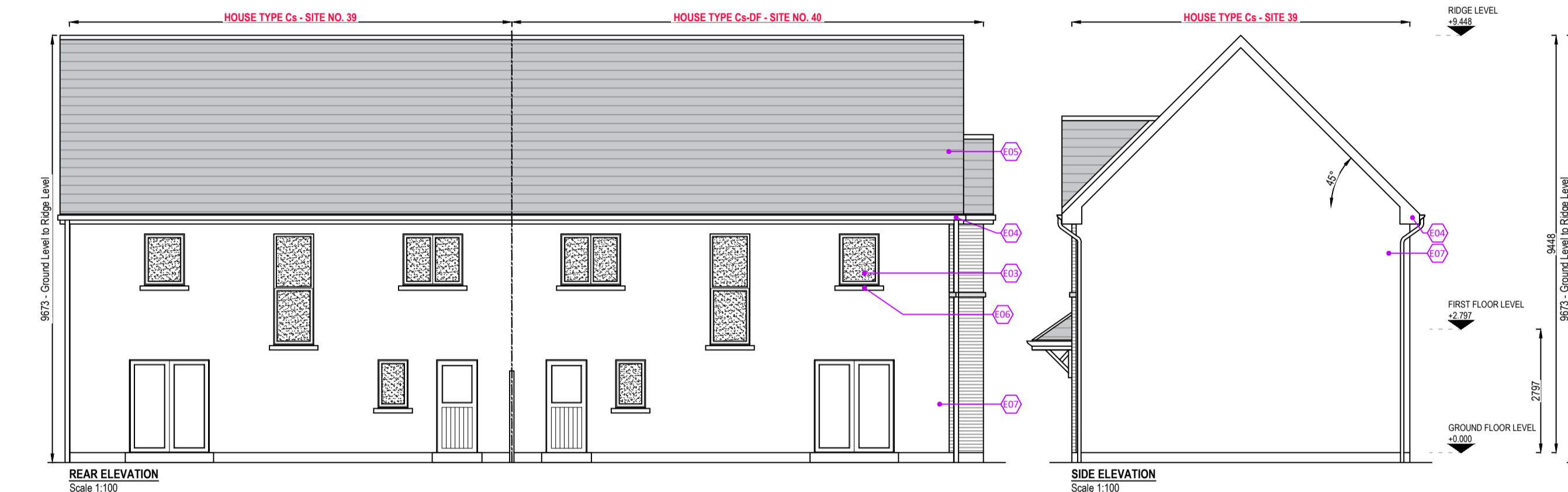
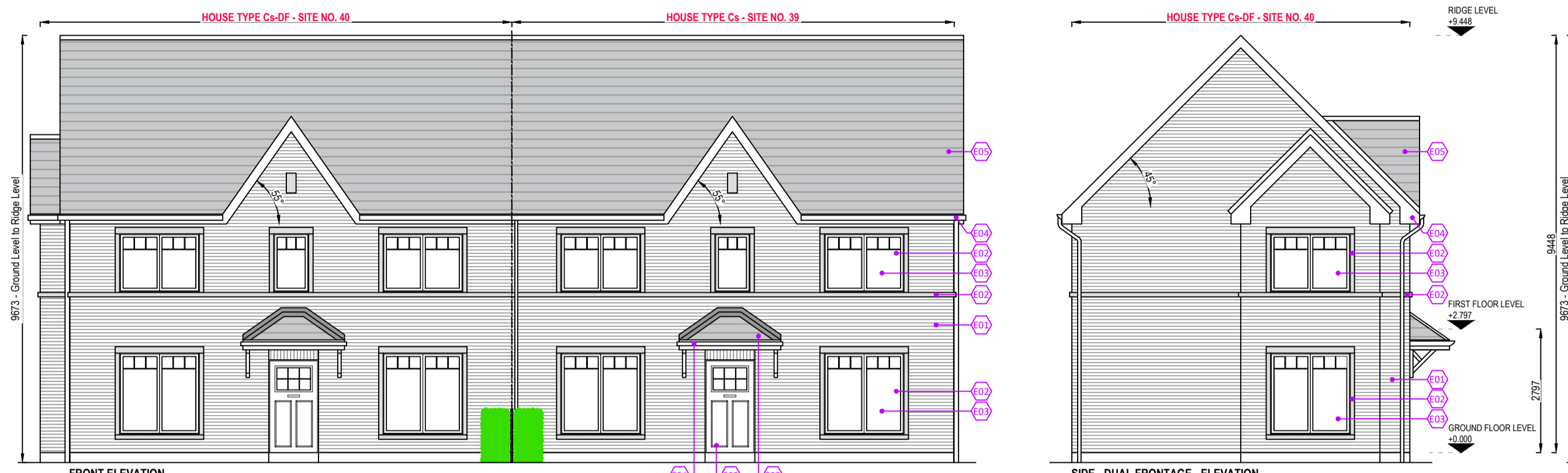


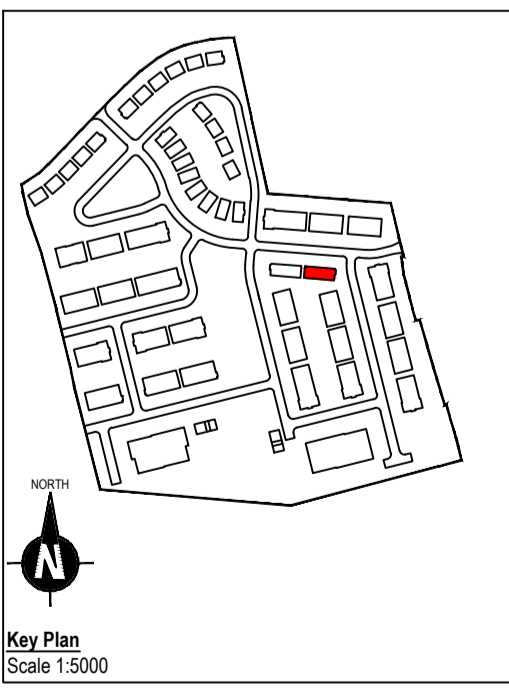
**HOUSE TYPE Cs-Cs-DF (DUAL FRONTAGE) - SITE NO.'s 39 & 40**



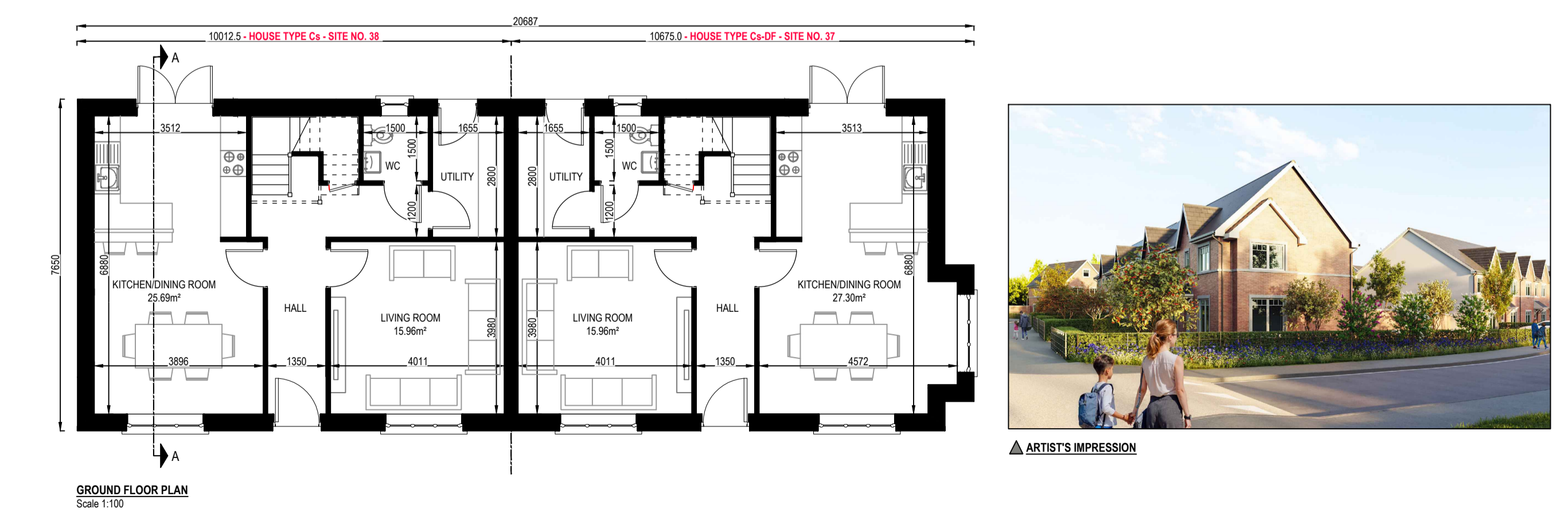
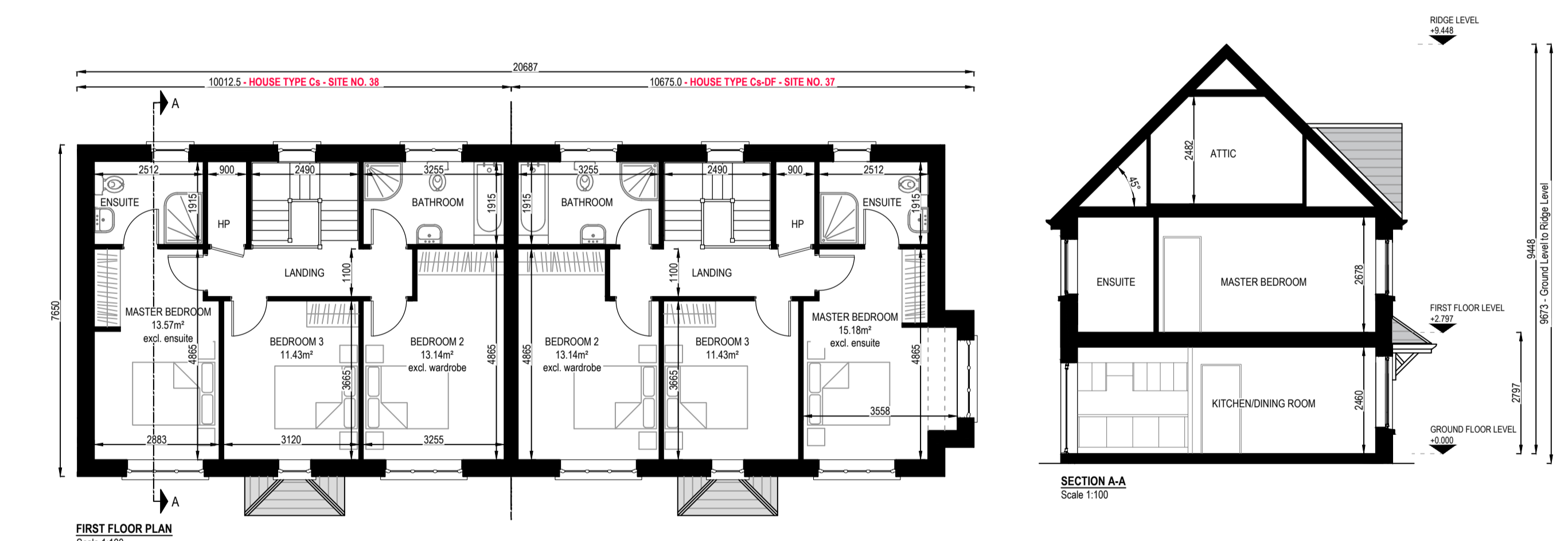
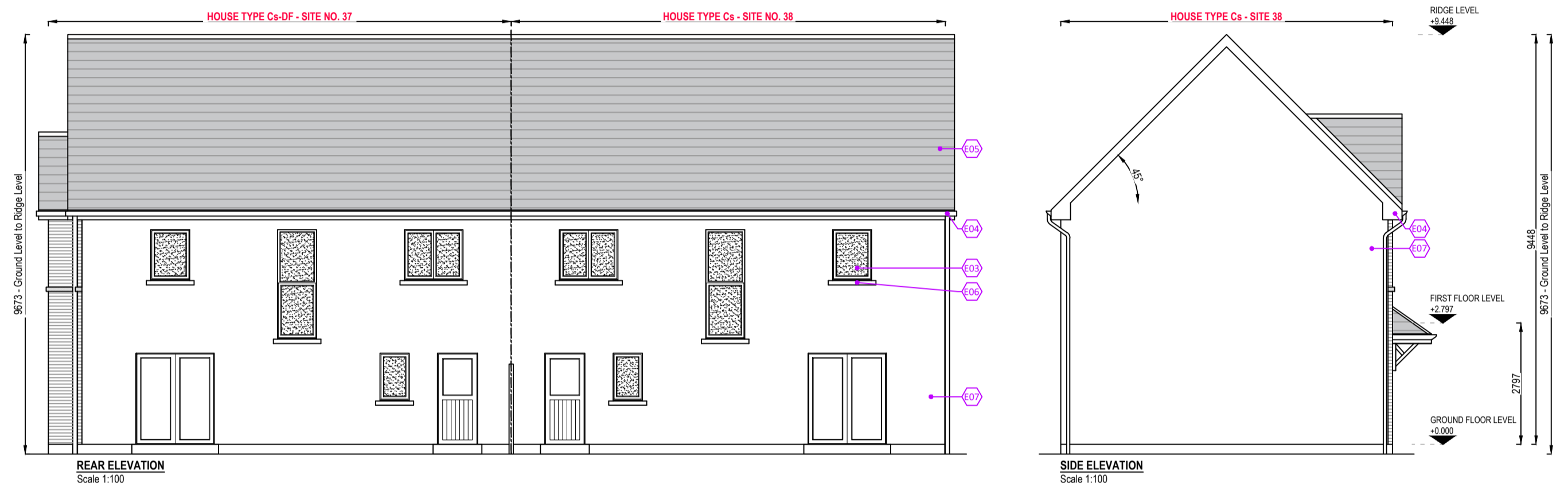
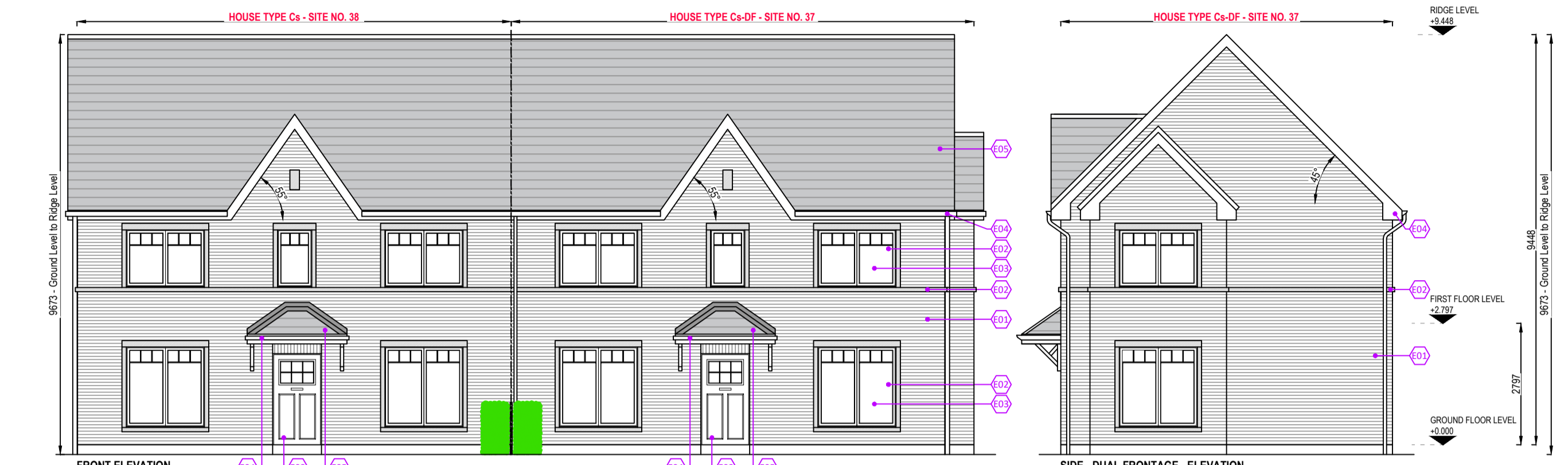
SEE KEY PLAN FOR ORIENTATION

FOR FINISHED FLOOR LEVELS  
SEE DWG NO.'s 24004-A-112 & 113

|                              | Required           | House Type Cs        | House Type Cs-DF     |
|------------------------------|--------------------|----------------------|----------------------|
| Ground Floor Area            | -                  | 65.99m <sup>2</sup>  | 66.67m <sup>2</sup>  |
| First Floor Area             | -                  | 65.99m <sup>2</sup>  | 66.67m <sup>2</sup>  |
| Gross Floor Area             | 100m <sup>2</sup>  | 130.12m <sup>2</sup> | 133.34m <sup>2</sup> |
| Min. Main Living Room        | 15m <sup>2</sup>   | 15.96m <sup>2</sup>  | 15.96m <sup>2</sup>  |
| Aggregate Living Area        | 37m <sup>2</sup>   | 41.65m <sup>2</sup>  | 43.26m <sup>2</sup>  |
| Bedroom 1                    | 13m <sup>2</sup>   | 13.57m <sup>2</sup>  | 15.18m <sup>2</sup>  |
| Bedroom 2                    | 11.4m <sup>2</sup> | 13.14m <sup>2</sup>  | 13.14m <sup>2</sup>  |
| Bedroom 3                    | 11.4m <sup>2</sup> | 11.43m <sup>2</sup>  | 11.43m <sup>2</sup>  |
| Aggregate Bedroom Area       | 35m <sup>2</sup>   | 38.14m <sup>2</sup>  | 39.75m <sup>2</sup>  |
| Storage incl. excl. wardrobe | 6m <sup>2</sup>    | 7.32m <sup>2</sup>   | 7.32m <sup>2</sup>   |



**HOUSE TYPE Cs-Cs-DF (DUAL FRONTAGE) - SITE NO.'s 37 & 38**



SEE KEY PLAN FOR ORIENTATION

FOR FINISHED FLOOR LEVELS  
SEE DWG NO.'s 24004-A-112 & 113

|                              | Required           | House Type Cs        | House Type Cs-DF     |
|------------------------------|--------------------|----------------------|----------------------|
| Ground Floor Area            | -                  | 65.99m <sup>2</sup>  | 66.67m <sup>2</sup>  |
| First Floor Area             | -                  | 65.99m <sup>2</sup>  | 66.67m <sup>2</sup>  |
| Gross Floor Area             | 100m <sup>2</sup>  | 130.12m <sup>2</sup> | 133.34m <sup>2</sup> |
| Min. Main Living Room        | 15m <sup>2</sup>   | 15.96m <sup>2</sup>  | 15.96m <sup>2</sup>  |
| Aggregate Living Area        | 37m <sup>2</sup>   | 41.65m <sup>2</sup>  | 43.26m <sup>2</sup>  |
| Bedroom 1                    | 13m <sup>2</sup>   | 13.57m <sup>2</sup>  | 15.18m <sup>2</sup>  |
| Bedroom 2                    | 11.4m <sup>2</sup> | 13.14m <sup>2</sup>  | 13.14m <sup>2</sup>  |
| Bedroom 3                    | 11.4m <sup>2</sup> | 11.43m <sup>2</sup>  | 11.43m <sup>2</sup>  |
| Aggregate Bedroom Area       | 35m <sup>2</sup>   | 38.14m <sup>2</sup>  | 39.75m <sup>2</sup>  |
| Storage incl. excl. wardrobe | 6m <sup>2</sup>    | 7.32m <sup>2</sup>   | 7.32m <sup>2</sup>   |



**COPYRIGHT**  
THIS DOCUMENT AND ALL DATA CONTAINED HEREIN REMAIN THE PROPERTY OF O'DALY ARCHITECTS. IT IS SUPPLIED IN CONFIDENCE FOR EVALUATION PURPOSES ONLY UNDER THE CONDITION THAT SAME IS NOT USED, REPRODUCED OR TRANSMITTED IN ANY WAY TO OTHERS WITHOUT WRITTEN CONSENT.

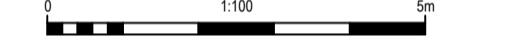
**DIMENSIONS**  
UNLESS OTHERWISE STATED, DIMENSIONS SHOWN ARE IN MILLIMETRES. NO DIMENSIONS TO BE SCALED FROM THIS DRAWING. ALL DIMENSIONS TO BE CHECKED BY THE CONTRACTOR ON SITE AND ANY DISCREPANCIES TO BE REPORTED TO THE ARCHITECT.

| TAG NO. | ELEVATION TAG NOTE  |
|---------|---|
| E01     | Red brick finish  |
| E02     | Limestone sills, surrounds & string course on brick elevations                  |
| E03     | A-called uPVC windows & composite front door                                    |
| E04     | Selected fascia, soffit & rainwater goods                                       |
| E05     | Black concrete roof tile complete with continuous dry verge & dry ridge systems |
| E06     | Precast concrete sills to dashed elevations                                     |
| E07     | Dry dash finish   |

Key Plan  
Scale 1:5000

SEE KEY PLAN FOR ORIENTATION  
FOR FINISHED FLOOR LEVELS  
SEE DWG NO.'s 24004-A-112 & 113

|                              | Required           | House Type Cs        | House Type Cs-DF     |
|------------------------------|--------------------|----------------------|----------------------|
| Ground Floor Area            | -                  | 65.99m <sup>2</sup>  | 66.67m <sup>2</sup>  |
| First Floor Area             | -                  | 65.99m <sup>2</sup>  | 66.67m <sup>2</sup>  |
| Gross Floor Area             | 100m <sup>2</sup>  | 130.12m <sup>2</sup> | 133.34m <sup>2</sup> |
| Min. Main Living Room        | 15m <sup>2</sup>   | 15.96m <sup>2</sup>  | 15.96m <sup>2</sup>  |
| Aggregate Living Area        | 37m <sup>2</sup>   | 41.65m <sup>2</sup>  | 43.26m <sup>2</sup>  |
| Bedroom 1                    | 13m <sup>2</sup>   | 13.57m <sup>2</sup>  | 15.18m <sup>2</sup>  |
| Bedroom 2                    | 11.4m <sup>2</sup> | 13.14m <sup>2</sup>  | 13.14m <sup>2</sup>  |
| Bedroom 3                    | 11.4m <sup>2</sup> | 11.43m <sup>2</sup>  | 11.43m <sup>2</sup>  |
| Aggregate Bedroom Area       | 35m <sup>2</sup>   | 38.14m <sup>2</sup>  | 39.75m <sup>2</sup>  |
| Storage incl. excl. wardrobe | 6m <sup>2</sup>    | 7.32m <sup>2</sup>   | 7.32m <sup>2</sup>   |



THIS DRAWING SHOULD BE READ IN CONJUNCTION WITH THE HOUSING QUALITY ASSESSMENT SCHEDULE DOCUMENT REF. 24004-AR-HQA



1st Floor - Unit 13(B) - Mullaghboy Industrial Estate  
Navan - County Meath - Tel: (046) 9021233  
Mobile: (087) 0525233 - Email: ivan@odaly.ie



Client:  
Loughglinn Developments Ltd.

Project Name and Address:  
Proposed Large Residential Development (LRD) at "Crowspark 1st Division", Kildesley Road, Trim, County Meath.

Project Stage:  
Planning

Drawing Name:  
House Type Cs-Cs-DF & Cs-DF-Cs  
3 Bedroom, 2 Storey, Semi-Detached House &  
3 Bedroom, 2 Storey, Semi-Detached, Dual Frontage House  
Site No.'s 37-38 & 39-40

Drawn By:  
iod

Scale:  
as shown @ A1

Checked By:  
iod

Date:  
04.06.2026

Drawing Number:  
24004-AR-206

Revision:  
P01